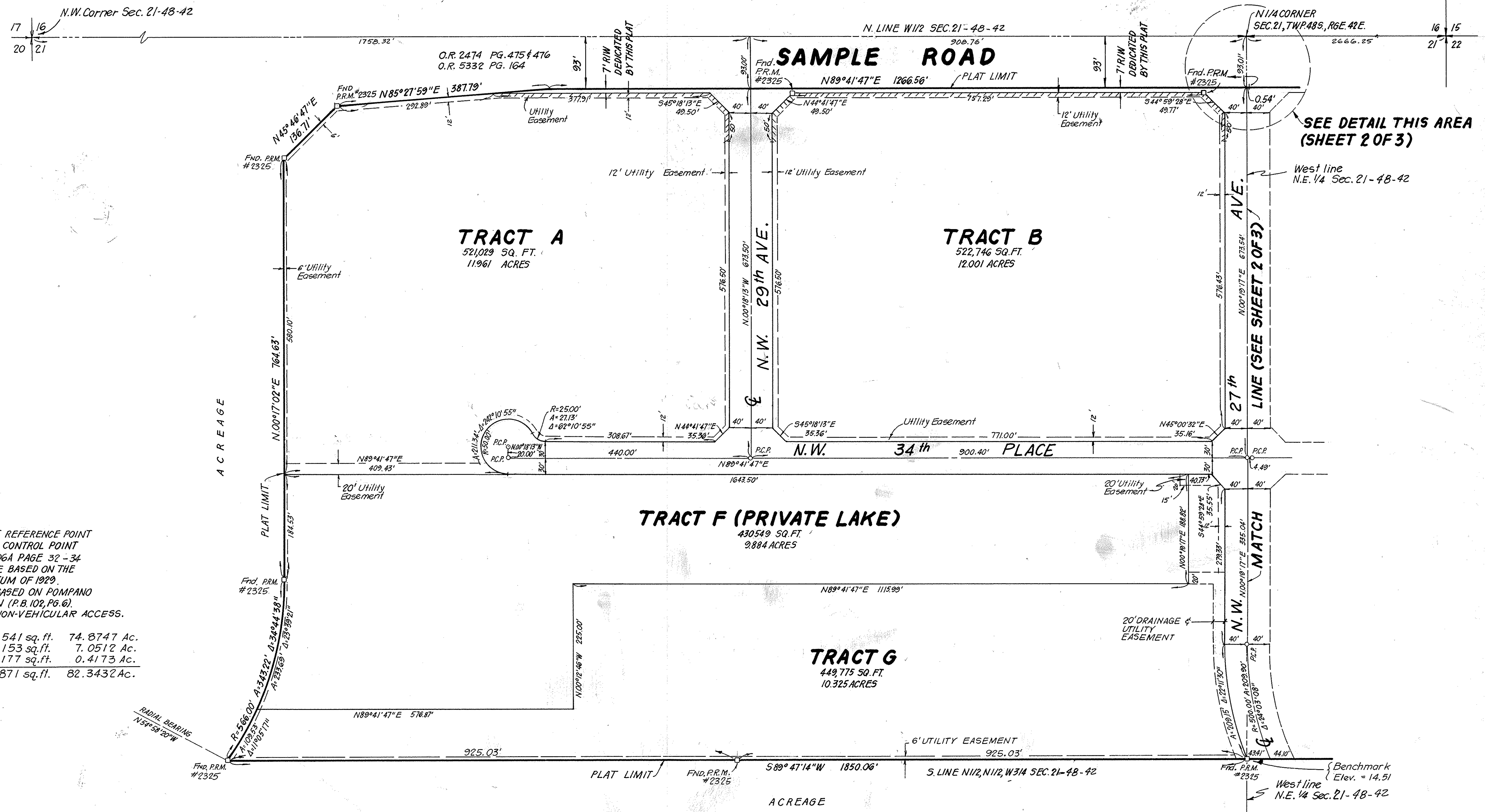
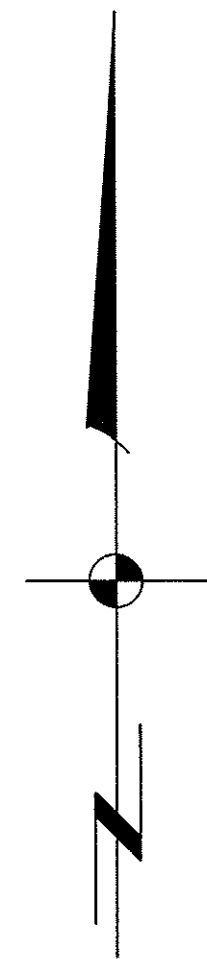
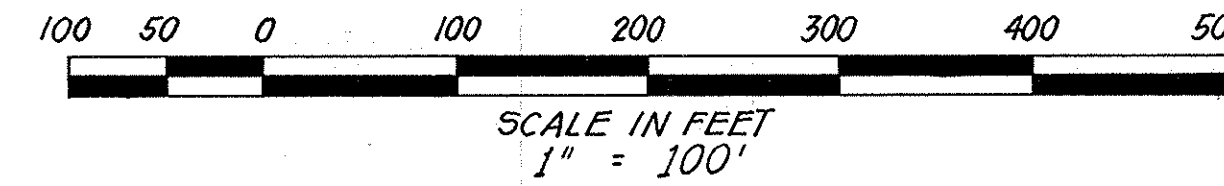


# POMPANO INDUSTRIAL PARK THIRD ADDITION

A PARCEL OF LAND IN SECTION 21, TOWNSHIP 48 SOUTH, RANGE 42 EAST  
BROWARD COUNTY, FLORIDA

PREPARED BY:  
**KEITH AND SCHNARS, P.A.**  
ENGINEERS · PLANNERS · SURVEYORS  
1115 N.E. 4TH AVENUE  
FORT LAUDERDALE, FLORIDA



**P&Z**

PZ24-12000024

08/27/2025

6999C